

Community Engagement: NCL Integrated Care Board

NCL ICB Engagement Strategies

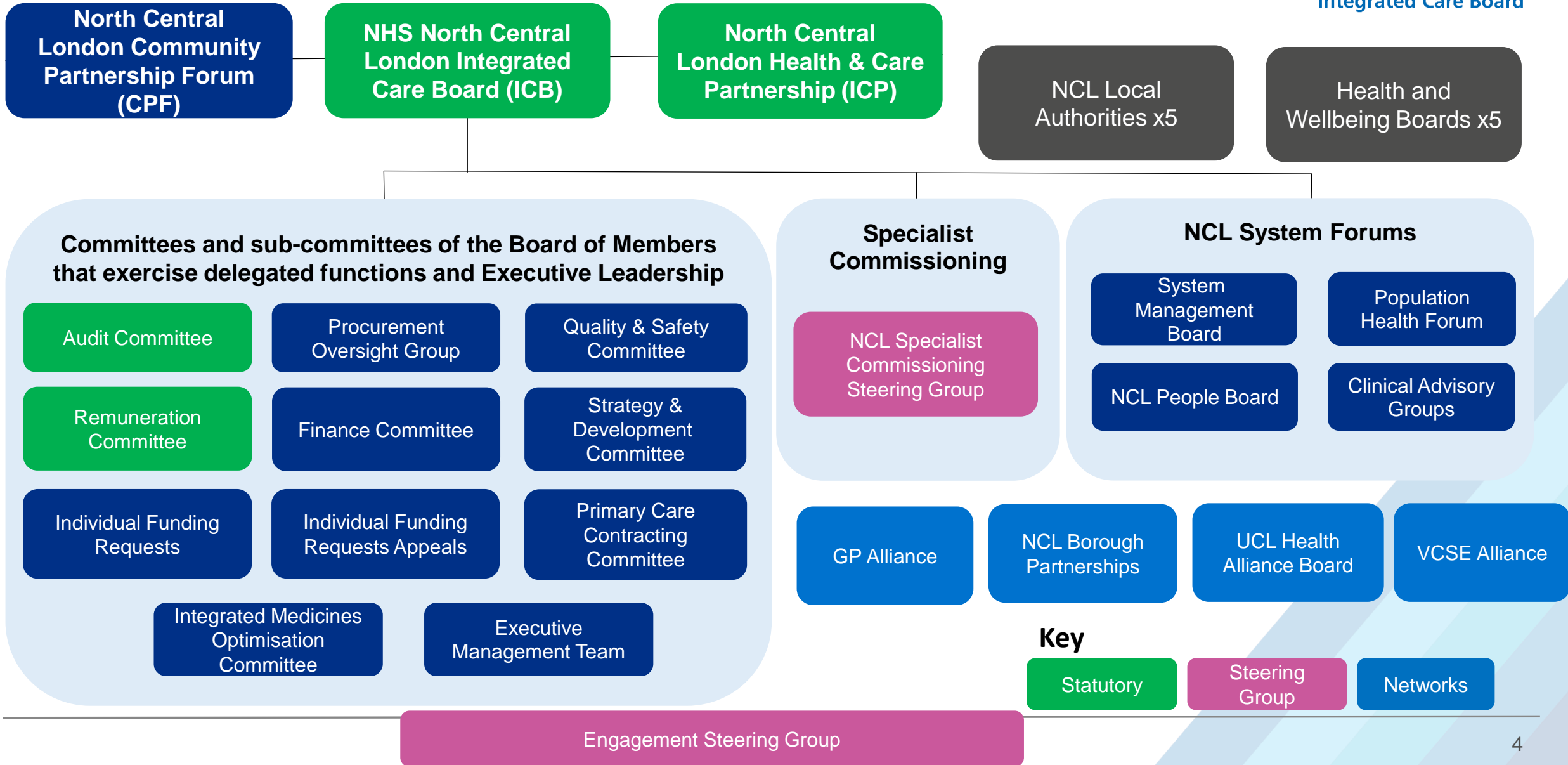
- The NCL ICB has two strategies: [*Working with our People and Communities and Working with our VCSE*](#)
- Set an ambitious commitment to strong community engagement and empowerment approaches across NCL, working with VCSE partners
- Significant input from commissioners, joint commissioners, public health, patient networks, VCSE and VCSE Alliance and sector, harnessing Council expertise.
- Strong support regarding the aims, principles and approaches – and to building system approaches to working with our communities and our VCSE partners.
- Much of the activity is delivered at neighbourhood and place level – and the Strategies are being used to support Borough thinking and plans
- Both strategies are partner documents to the Population Health Improvement Strategy & approach.

How we are working with communities

NCL ICB Governance structure



North Central London
Integrated Care Board



Governance and ways of working

- Working with **HealthWatch** across NCL
 - Strengthened our relationship with HealthWatch through the new North Central London working arrangements, and representation on some of our ICB Committees and Steering Groups
- **ICS VCSE Alliance**
 - Development of Alliance led by VCSE in NCL with funding through NHS England and ICB
 - A steering group made up of five VCSE umbrella organisations, across North Central London alongside six other representative organisations that focus on homelessness, disability, refugee and migrant, deprivation and isolation and mental health across North Central London.
 - Embed VCSE within NCL governance structures
 - Represent and champion role of VCSE within ICB/S
 - Champion communities who face highest health inequalities and deprivation
 - Co-designed [Working with our VCSE strategy](#)
 - A key partner in developing the Population Health and Integrated Care Strategy;
 - For 23/24 will be an integral part of developing the delivery plan for the Population Health and Integrated Care Strategy.

Governance and ways of working

- **Community Partnership Forum**
 - ICS forum Chaired by ICS Chair, Mike Cooke
 - Bringing community partners across NCL to engage at a strategic level on ICS strategies and programmes
 - Alongside space for open conversations and system updates
 - Includes representatives from HealthWatch, VCSE Alliance, PPG members
- **Engagement Steering Group**
 - Overseeing the implementation of the [Working with People and Communities and Working with VCSE strategies](#)
 - Raising the voice of our diverse communities who face the highest health inequalities and are underserved
 - Supporting embedding community and VCSE voice in ICS planning and decisions
 - Learning from good practice and innovation to achieve a consistent high-quality approach
 - Championing what good health and wellbeing means to our local communities and community-led outcomes
 - Championing and communicating the importance and value of community engagement and empowerment
 - Membership consists of VCSE Alliance, HealthWatch, Community Participants NCL Local Authority and Borough Partnership reps, ICB colleagues.

Community Participants

- We are committed to engaging with local communities and people
- This includes ensuring we have community voice woven into our governance structures
- We will be recruiting to 6 Community Participant roles
- The Community Participants will sit on three ICB committees
- In addition, we will also recruit two Patient Safety Partners that will sit on the Quality Committee
- We are developing JD and other recruitment materials – with VCSE and community partners
- We aim to recruit these roles over the summer with Community Participants in place by early Autumn.

A range of community initiatives

Including:

- **Community Research and Action Programme:** developing strong VCSE partnerships within each Borough, raising local communities' voices, and investment in grass-roots VCSE. We deliver a community research and asset-building programme which tackles health inequalities and addresses barriers to accessing statutory services. The learning and insights are directly utilised in the development of Borough Partnership priorities and decisions.
- **NCL PPG Network:** building on learning from Enfield we are exploring how to develop a strong PPG network across NCL with a focus on a network between PPGs, building diversity of voice and improving reach.
- **Community engagement on transformation programmes** including Start Well, set up to ensure that hospital-based maternity, neonatal and children and young people's services in NCL are fully meeting the needs of those that use them. We have to date engaged through 43 engagement events, reaching a total of 518 residents. The full engagement report can be read [here](#).
- **Long Covid community engagement** – working with HealthWatch who undertook in-depth research to understand the challenges local people and communities face when managing Long Covid and accessing care and support – working with ICB Post-Covid Steering Group and programme lead to develop & implement key recommendations
- **NCL Residents' Health Panel** is an online engagement platform – this year we are refreshing and expanding the membership with a particular focus on local communities who face the highest health inequalities.
- **Community Connectors:** working with HealthWatch to deliver a community champions-style programme, supporting communities who face high health inequalities to support local people to have blood pressure checks, linking them services and support, and understanding on the lifestyle factors which can impact high blood pressure.

Questions